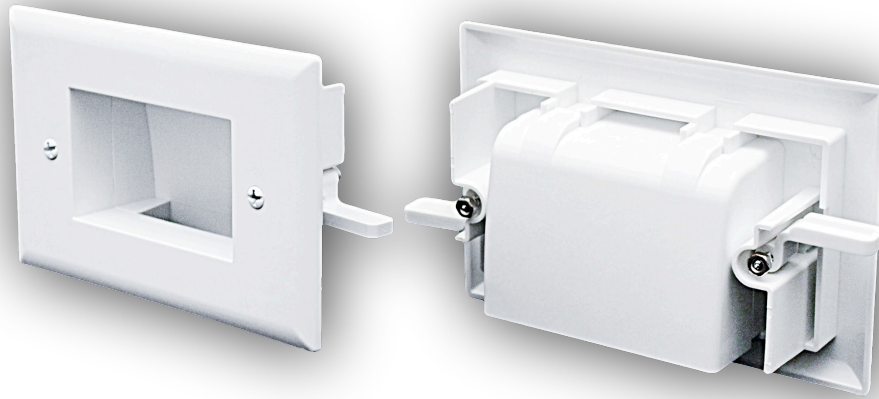


# Easy Mount Recessed Cable Plates

## "Feature Sheet"



**FRONT**

**BACK**

The DataComm Easy Mount Recessed Low Voltage Cable Plates are designed to be installed without “low voltage mounting plates” or “old work mud rings”. The mounting wings are molded into the Easy Mount wall plate and fasten tightly against the back of the drywall.

### Key Features:

- Can be installed upright, upside down, or sideways on walls up to 1" thick
- Slim Fit Version (45-0009-WH) for smaller wall cavity (3/4" - 1" in depth)
- Ideal for low-voltage AV, data, and communication cabling
- Easy Mount™ system enables fast, secure installation in drywall
- Reduces cable strain and improves overall cable management
- Provides a clean, professional finished appearance
- Suitable for residential and commercial applications
- ETL Listed to UL Standards

P/N: 45-0008-XX (Available in Black (BK) & White (WH))

P/N: 45-0009-WH (Slim Fit Version)

P/N: 50-3338-WH-KIT (2 x 45-0008-WH)



**DATA COMM**  
ELECTRONICS

**sales** [Orders@datacommelectronics.com](mailto:Orders@datacommelectronics.com)

**support** [Info@datacommelectronics.com](mailto:Info@datacommelectronics.com)

**office** 770.448.0540