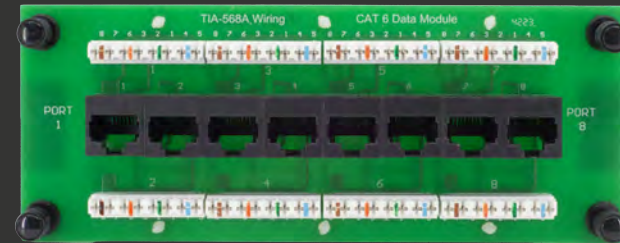
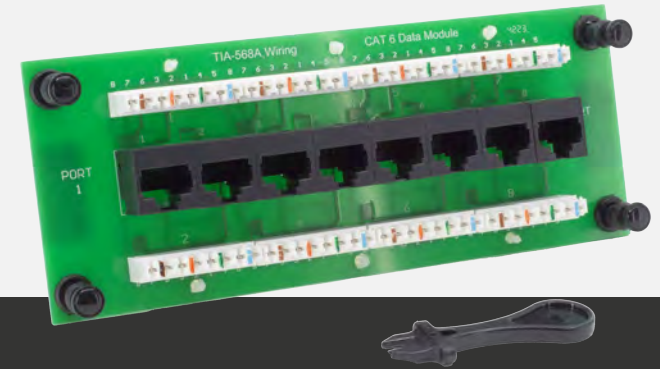
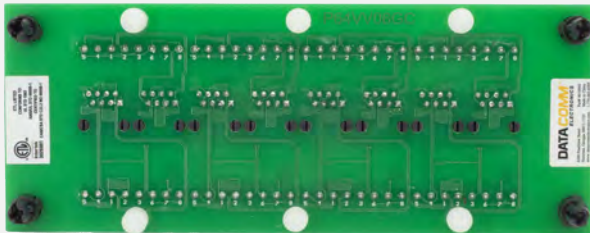


Data Modules

All DataComm Electronics modules are designed and tailored to be used with DataComm Electronics ABS plastic media enclosures, but are not limited to these items or application.

Features

- Used to simplify and organize your network wiring terminations
- Non-bridged Category 5e or 6 data board with 4 PAIR 110 IDC punchdown connectors providing high performance connectivity
- 8 Category 5e or Category 6 RJ45 ports
- Complies with all TIA/EIA-568 requirements
- Requires the use of a network router switch
- ETL Listed. Conforms to UL STD 1863 ANSI/UL STD 60950-1 Certified to CAN/CSA STD c 22.2 NO 60950-1



Part Number Description

80-0030	8 Port Cat 5e Data Module
80-0038	8-port Cat 5e Female to Female Data Module
80-0040	8 Port Cat 6 Data Module
80-0048	8-port Cat 6 Female to Female Data Module
80-0068	8-port Cat 6A Female to Female Data Module